

INSTALLATION INSTRUCTIONS

DESCRIPTION: Folding Windshield Kit
 PART NUMBER: 1XD-F83J0-V0
 MODEL: Viking, Viking VI



⚠ WARNING

Please read and understand these instructions completely before installation to avoid possible injury, or damage to the accessory or vehicle.

NOTICE:

This installation requires a torque wrench and should be performed by an authorized Yamaha dealer or other qualified technician.

WARRANTY INFORMATION:

Genuine Yamaha Accessories are covered by a one-year limited warranty against defects in material or workmanship. Labor for replacement of defective components is not covered. See your Yamaha dealer for a copy of the warranty statement.

DEALER OR INSTALLER:

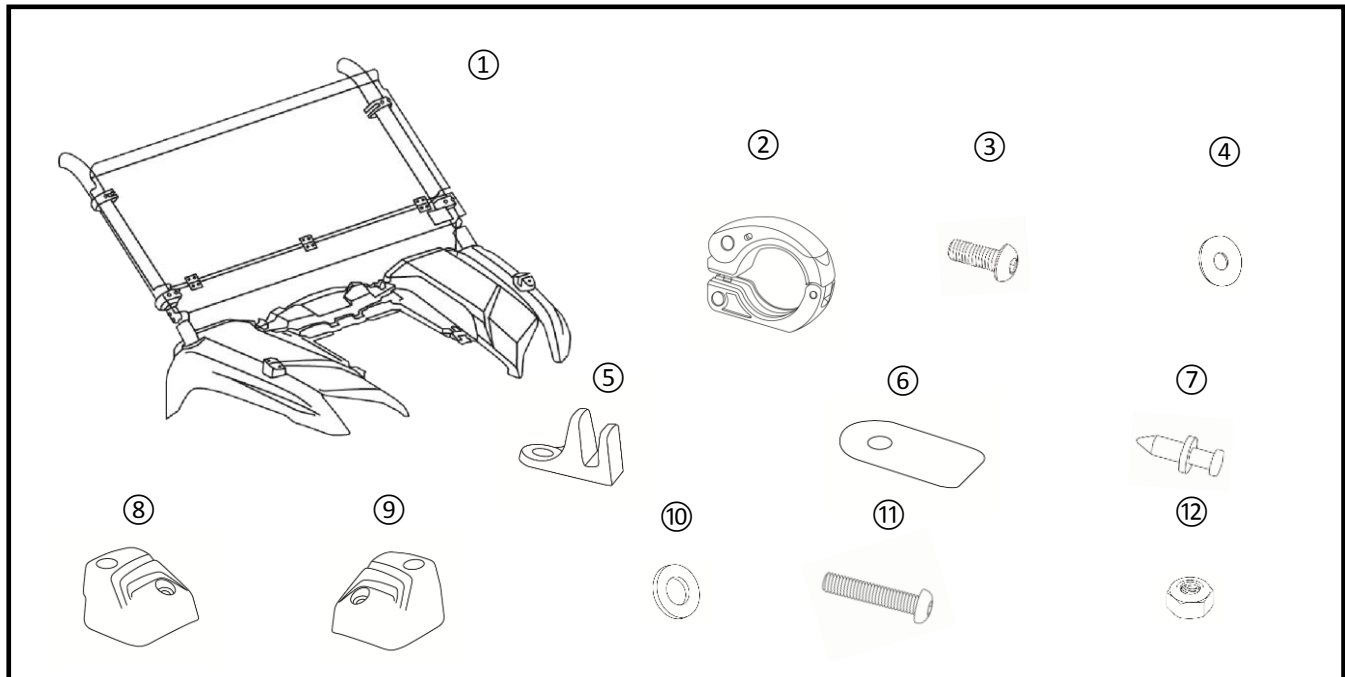
These instructions contain important information for future reference and *must* be given to the customer.

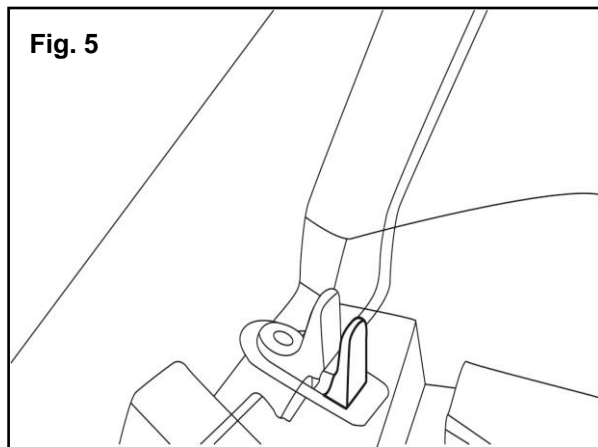
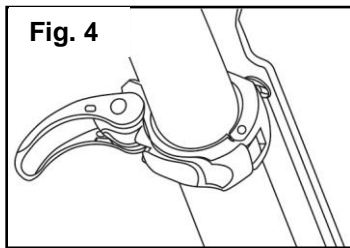
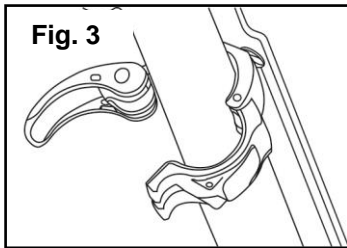
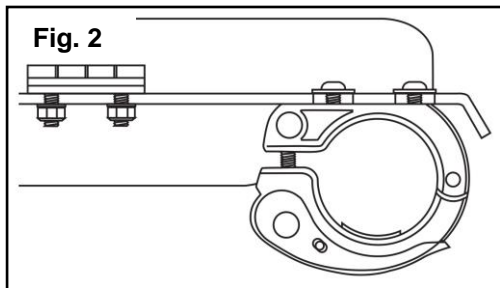
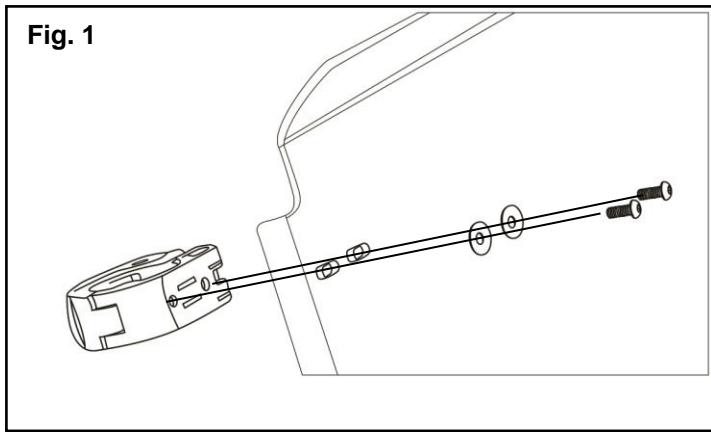
PARTS LIST:

Item #	Part Number	Description	Qty
--	1XD-F83J0-V0	Windshield kit	1
1	**	Windscreen assembly	1
2	1XD-F72C2-V0	Clamp	4
3	*	Button Head Bolt (M6-1.0 x 16 mm)	8
4	*	Large Washer (M6, 18 mm OD)	8
5	1XD-K7125-V0	Hood Stay	2
6	*	Hood Protector	2
7	*	Rivet	2
8	1XD-K7238-V0	Rubber Hood Bracket, Right Hand	1
9	1XD-K7238-T0	Rubber Hood Bracket, Left Hand	1
10	*	Washer	8
11	*	Button Head Screw (M6 x 30 mm)	4
12	*	Nylock Nut	4

* Part supplied with kit only and not available separately.

**1XD-F7145-V1 is the part # for the hinge assembly. It is available as a replacement part.



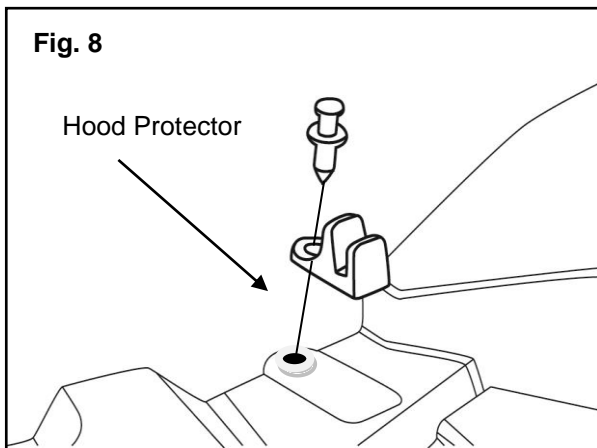
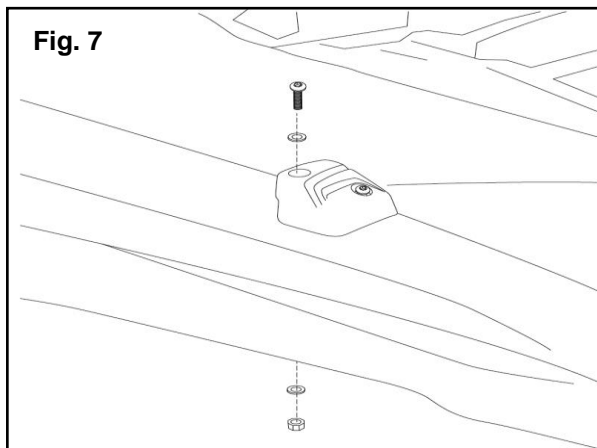
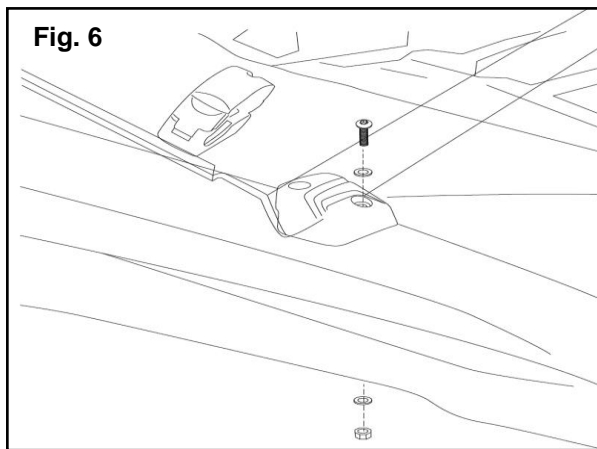


PREPARATION:

- Place vehicle on a secure and level surface.
- Set the parking brake.
- Clean all mounting surfaces before beginning installation.

INSTALLATION:

1. Assemble the clamps (2) onto the windshield using the button head bolts (3) and washers (4) as shown in (Fig. 1). Keep the button head bolts loose at this time.
2. Note the clamp orientation. The clamp latches should open inwards as shown in (Fig. 2 - 4). If the clamp is either too tight or too loose, rotate the latch handle until the clamp is properly secured.
3. Fit the windshield onto the vehicle.
4. Locate the two hood stays (5). Loosen the windshield clamps and raise the windshield up enough to allow placement of the hood stays as shown in (Fig. 5). Make sure the windshield is taut against the hood stay and that there is enough clearance to open the hood.
5. With the hood stays now in place, use a marker to mark the spots to drill a hole in the hood. **Do not drill the hood at this time, as this will be done in a later step.**
6. Release the top mounting clamps and gently fold the shield down onto the hood.
7. Locate the rubber hood brackets (8 & 9) and place them between the shield and the hood as shown in (Fig. 6). The parts are left/right specific, so double check that the contours of the rubber match the hood and that the top of the windshield is seated firmly in the slot.
8. Mark the back of the rubber hood brackets with either a marker or a piece of tape.
9. Raise the windshield up into the upright position and secure the mounting clamps.
10. Slide the rubber hood brackets forward 5 mm from the marked position.
11. Using the rubber hood bracket as a template, drill out the exposed holes using a $\frac{1}{4}$ " drill bit. **TIP: Maintain shallow drill bit penetration.**
12. Place washers (10) onto the button head screws (11) and then insert it into the rubber hood bracket. Secure with washers (10 and nuts (12) as shown in (Fig. 7).
13. Snug all 4 screws that hold the rubber hood brackets in place being careful not to over torque
14. Remove entire windshield from the vehicle. Make sure not to lose the hood stays during removal.



15. Use a 5/16" drill bit and drill out the previously marked holes for the hood stays.

TIP: Maintain shallow drill bit penetration.

16. Clean the surface of any debris and apply the clear hood protectors (6).

17. Place the hood stay (5) on the hood protector (6) and install the rivet (7) as shown in (Fig. 8).

18. Reinstall the windshield by first placing the shield into the hood stays. Then secure all clamps. Adjust as needed

19. Tighten clamp button head bolts to 2.7 Nm (0.28 m • kg, 2 ft • lb).

MAINTENANCE:

Periodically check all hardware for tightness and re-torque as required.

CARE AND CLEANING:

Wash using a mild soap and water solution and soft cloth.

CUSTOMER SERVICE:

For further information see your Yamaha dealer.

ESTIMATED TIME TO INSTALL: 0.9 HRS